

## School Readiness

Your child's Key Person will work with you and school teachers to help your child's transition into school.

Your child's teacher would be very happy if when they start school they can get dressed, go to the toilet and eat their meals independently.

They'd also like if they can hold a pencil with a tripod grip, share toys, join in with group activities, take risks, concentrate and listen.



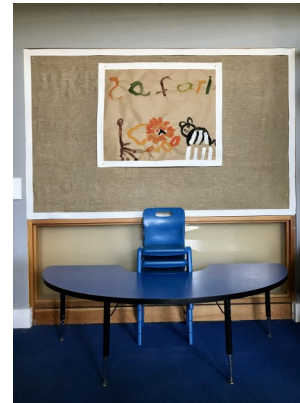
**Runner Up Nursery of the Year - South (NNRA 2020)**



## Hythe Bay Children's Centre Nursery Safari (Term-Time-Only)

2-5 year olds , open 9-3, 38 weeks per year

Runner Up Nursery of the Year - South (NNRA 2020)



Charity Number: 1175752 Ofsted URN: EY556679

## Daily Routine

9:00	Arrivals, Self Registration
9:10	Hello Circle am
9:20	I Can, Songs, Garden Access, Free-Flowing Child-Initiated Play, Morning Snack at 10am
11:45	Story / Song / Get ready for home or lunch
12:00	Arrivals / Departures, Self Registration
12:10	Lunch
12:40	Hello Circle pm
12:50	I Can, Songs, Garden Access, Free-Flowing Child-Initiated Play, Afternoon Snack at 2pm
14:45	Get Ready for Home Time, Story/Song
15:00	Home Time

## Sessions

Morning 9:00-12:00 (includes morning snack)

Afternoon 12:00-3:00 (includes lunch and afternoon snack)

Short Day 9:00-3:00 (includes morning snack, lunch and afternoon snack)

## The Role of the Key Person

- ◆ To get to know the child and build a relationship with them, to help them feel happy and secure at nursery.
- ◆ To communicate and build a relationship with the child's family
- ◆ To respond sensitively to the child's needs
- ◆ To plan, track and monitor the child's progress and development
- ◆ To offer parents' meetings to discuss the child's progress.
- ◆ To work with any relevant professionals including reception school teachers, the special educational needs and disabilities co-ordinator, speech and language therapists, physiotherapists, specialist teachers and occupational therapists.

## Activities

We use 'in-the-moment' planning, following the children's interests.

We set up the room and garden to be welcoming and stimulating for each child. We interact with the children to help extend their learning and development.

## Home Visits

We encourage parents and carers to accept our offer of a home visit for children starting nursery or moving room. It's an opportunity to talk about your child and what you want from nursery and to ask any questions you might have.

